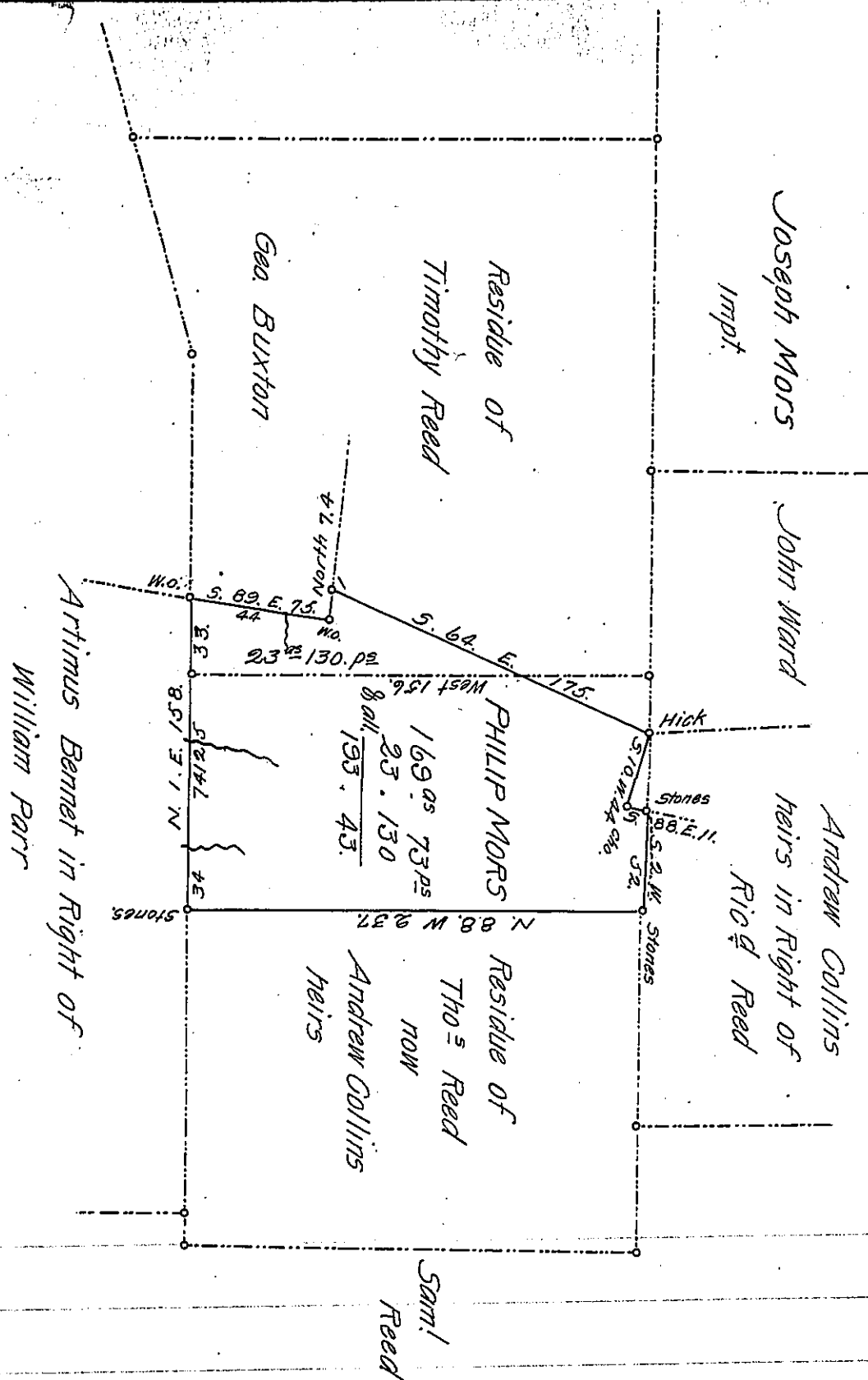


FORM No. 1.



Situate in Southampton Township Bedford County, Containing in both pieces 193^{ps} 43 perches and the usual Allowance of Six per Cent for Roads & C. Surveyed the 25 day of September 1864. Being parts of Larger Tracts of Land Originally Surveyed on Warrants, in Names of Timothy & Thomas Reed dated the 21st Feb. 1794. Containing both Tracts 850 1/2 Acres.

To James P. Barr. Esq! } Saml Ketterman
 S.G. } C.S.

23^{As}. 130^{ps} off Timothy Reed }
 169. 73 . Tho^s Reed }
 193. 43 in All

IN TESTIMONY ^{S.K.} _{C.S.} that the above is a copy of the original remaining on file in the Department of Internal Affairs of Pennsylvania, made conformably to an Act of Assembly approved the 16th day of February, 1833, I have hereunto set my Hand and caused the Seal of said Department to be affixed at Harrisburg, this twelfth day of October 1906.

Isaac B. Brown
 Secretary of Internal Affairs.